

Abuse / Neglect

This policy applies to: Patients who are suspected of being victims of abuse or neglect.

Exclusion Criteria: None

Recognize

- Injuries or burns in a pattern suggestive of intentional infliction.
- Injuries in various stages of healing or injuries scattered over multiple areas of the body.
- Patient, parent, or caregiver responding in an inappropriate manner to the situation.
- Malnutrition of extreme lack of cleanliness of the patient or environment.
- Infants: bulging of fontanelles and altered mental status.

Evaluate

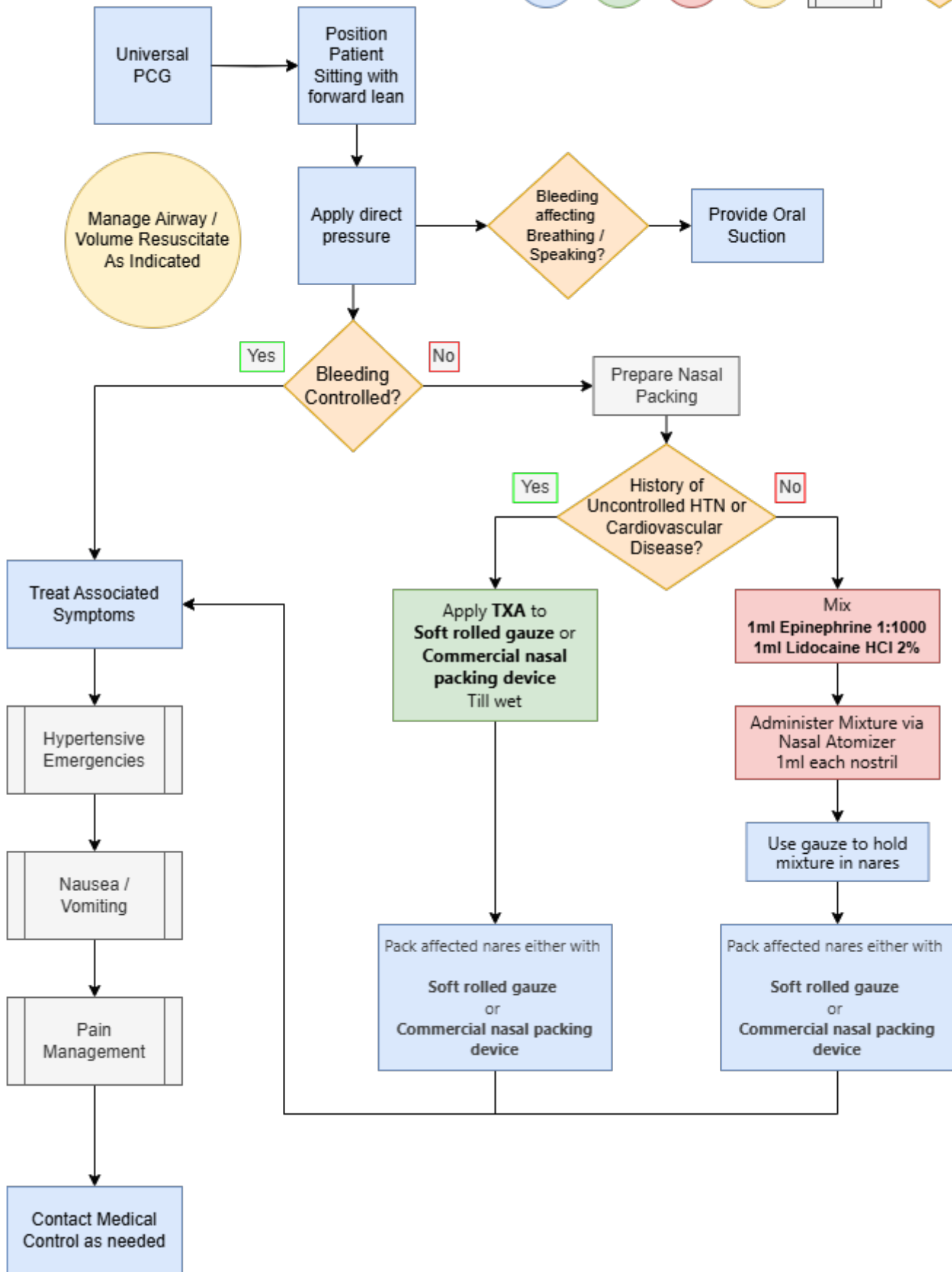
Administer Treatment

- Stabilize and treat injuries according to the appropriate protocol.
- Discourage patient from washing if sexual abuse is suspected.
- Document:
 - All statements made by the patient, parent or caregiver.
 - Any abnormal behavior on the part of the patient, parent or caregiver.
 - The condition of the environment.
 - Time and name of contact when reported to Adult Protective Services.
- Report all suspected cases of abuse / neglect to protective services. Do not initiate report in front of the patient, parent or caregiver.

Consider Differentials

- Not applicable

Navigate



References

Protocols

Medications

Procedures

Resources

Adult Protective Services phone: 1-800-252-5400

[Adult Protective Services reporting website.](#)

Revision #2

Created 11 December 2024 20:14:47 by James Anderson

Updated 11 December 2024 20:26:08 by James Anderson